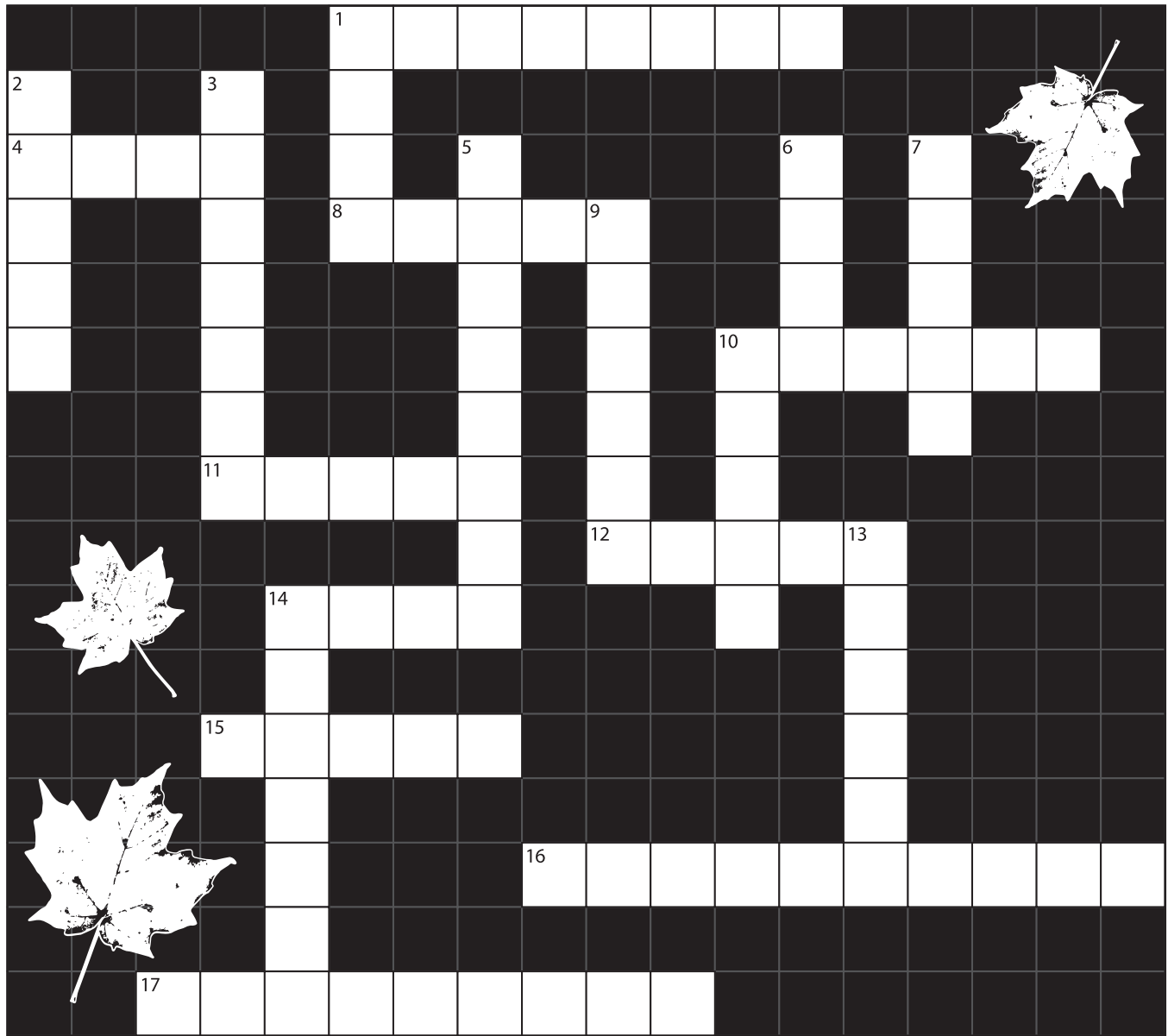


# MAPLE SYRUP SEASON: Crossword



## ACROSS

1. Sap flows when cold nights are followed by these (2 words).
4. Pails of sap were collected using a shouder\_\_\_\_\_.
8. Pioneers used a brace and bit to \_\_\_\_\_ tap holes.
10. These are tapped into trees.
11. Near the fire, \_\_\_\_\_ gets into your eyes.
12. When water is boiled it forms \_\_\_\_\_.
14. At the sugar shack, sap is boiled in large \_\_\_\_\_.
15. Fresh sap looks like this.
16. The evaporator is found here (2 words).
17. Maples lose their leaves in the fall. This makes them \_\_\_\_\_ trees.

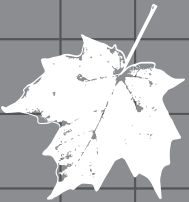

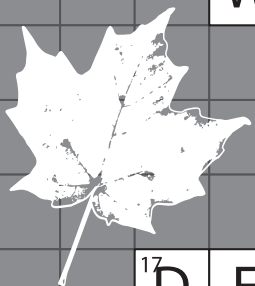
## DOWN

1. Most pioneer tools were made from this material.
2. Forty (40) pails of sap make only 1 pail of this.
3. Pioneers cooked sap in large, black \_\_\_\_\_.
5. Early settlers who made syrup.
6. Watch sap \_\_\_\_\_ off a spile into a pail.
7. We collect sap from \_\_\_\_\_ trees.
9. \_\_\_\_\_, bark and branches are used to identify trees.
10. Maple syrup tastes very \_\_\_\_\_.
13. Aboriginal people used birch bark containers called \_\_\_\_\_.
14. Modern spiles and tubing are made of this.



# MAPLE SYRUP SEASON: Crossword Answer Sheet

					1	W	A	R	M	D	A	Y	S								
2	S			3	K	O															
4	Y	O	K	E		O		5	P					6	D		7	M			
	R			T		8	D	R	I	L	9	L			R		A				
	U			T				O		E				I		P					
	P			L				N		A				10	S	P	I	L	E	S	
				E				E		V				W				E			
				11	S	M	O	K	E		E										
									R		12	S	T	E	A	13	M				
						14	P	A	N	S					T		O				
						L											K				
				15	W	A	T	E	R								U				
						S											K				
						T					16	S	U	G	A	R	S	H	A	C	K
						I															
				17	D	E	C	I	D	U	O	U	S								


# I'D LIKE TO BUY A VOWEL...

All of the vowels in the names of these common trees found in the sugarbush are missing. Use the letters hanging in the trees to fill in the blanks. For clues, use the word bank below.

S\_g\_r M\_pl\_

Wh\_t\_ P\_n\_

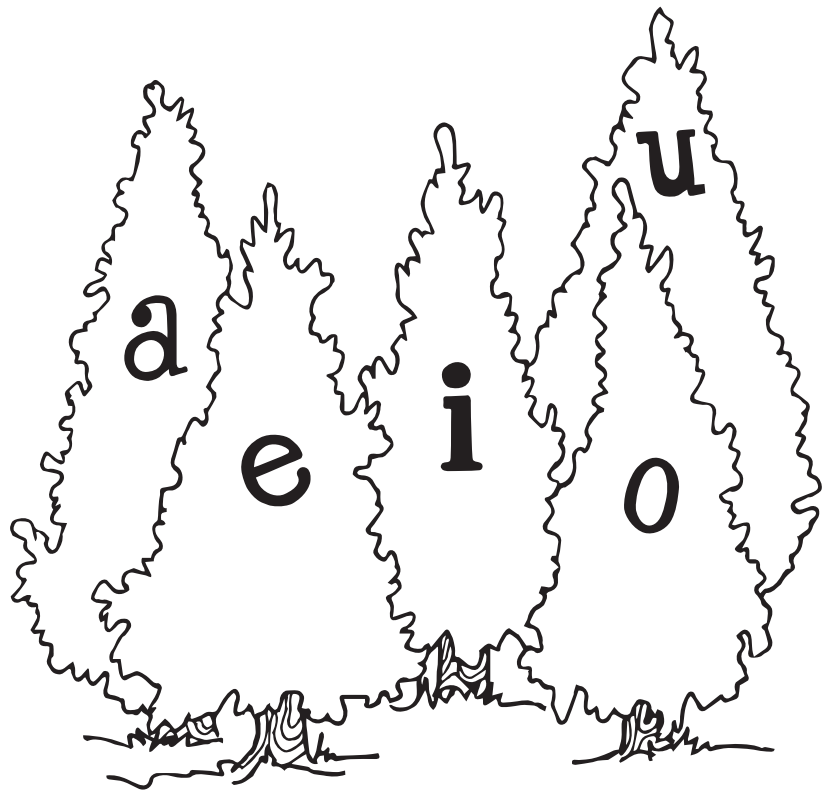
R\_d O\_k

\_\_st\_rn H\_ml\_ck

B\_\_ch

Wh\_t\_ \_sh

Wh\_t\_ Spr\_c\_



## WORD BANK

White Spruce

Eastern Hemlock

Beech

Sugar Maple

White Pine

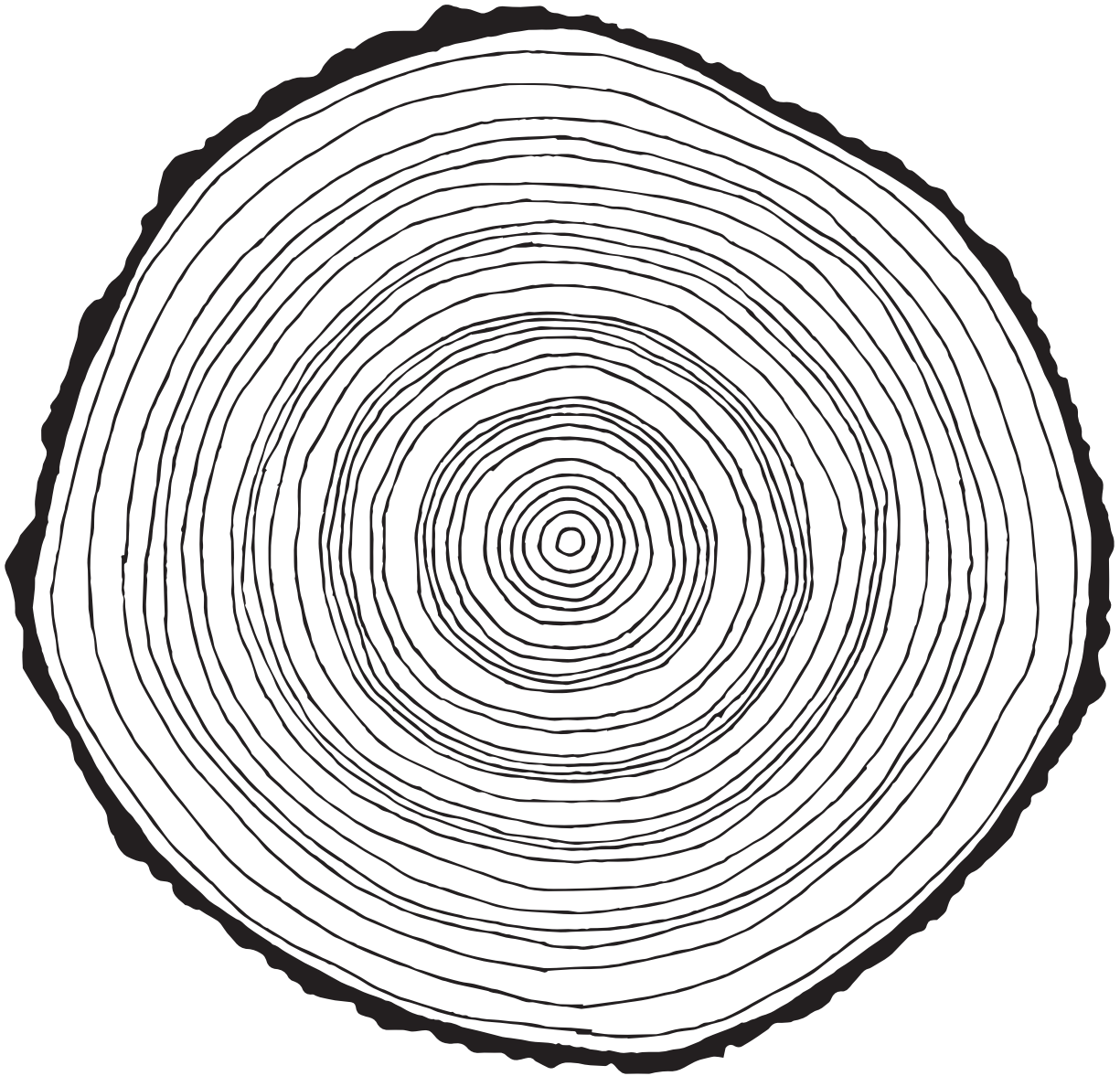
Red Oak

White Ash



# HISTORY IN A TREE

This is a **tree cookie** (a cross section) cut from a tree that was a seedling in 1988 and lived to be 30 years old. Each ring represents 1 year of growth for the tree. The centre ring marks the tree's first year of growth. Can you locate the rings that occurred at the same time as the events listed at the bottom of the page?



1. Put an "X" on the ring that grew during the year you were born.
2. Put an "HP" on the year a that the first Harry Potter novel, *The Philosopher's Stone*, was released (1997).
3. Put an "O" on the year of the Vancouver Winter Olympic's (2010).
4. Put a black dot on the year of the ice storm which caused damage to many of the sugar bushes in Ontario and Quebec (2013).
5. Plot a couple of events that you can think of that happened in the last 30 years.



# CREATE YOUR OWN HISTORY!

The life history of a tree can be told by looking at the tree "rings". A tree slice used to count the rings is called a "tree cookie". Below is a tree cookie that you can use to tell your life history. To make your personal tree cookie, first draw enough rings inside the cookie to equal your age today. Each ring is one year of your life. The first ring, at the very centre of the cookie, represents your first birthday. The last ring should be close to the bark. Identify the rings that mark special moments and events in your life. Events could include...when you born, your first day of school, a special trip with your family or with your class, when you got your family pet, and so on. Have fun creating your history!!!

